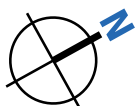


III Haus E | «Casa Alberti» | 2. OG

Grundriss 2. OG/Whg. E 2.3

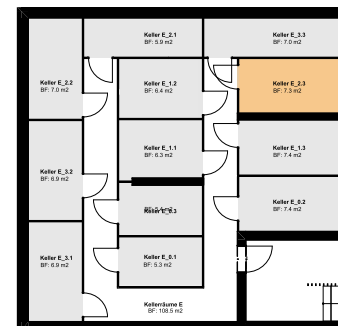
Masstab 1:100



3½-Zimmer-Whg. 92.44 m²

Entree	8.65 m ²
Küche/Wohnen	41.16 m ²
Zimmer	17.16 m ²
Zimmer	13.74 m ²
Bad/WC	5.80 m ²
Dusche/WC	5.93 m ²
92.44 m²	

Balkon	16.37 m ²
Keller	7.30 m ²



Whg. Nr. E 3.3	Whg. Nr. E 3.2	Whg. Nr. E 3.1
Whg. Nr. E 2.3	Whg. Nr. E 2.2	Whg. Nr. E 2.1
Whg. Nr. E 1.3	Whg. Nr. E 1.2	Whg. Nr. E 1.1
Whg. Nr. E 0.3	Whg. Nr. E 0.2	Whg. Nr. E 0.1
Tiefgarage		